

COMUNE DI CASTAGNETO CARDUCCI

AMPLIAMENTO DELLA EX SCUOLA SECONDARIA DI PRIMO GRADO IN FRAZ. DONORATICO, PIAZZALE EUROPA

CODICE ELABORATO

PROGETTO ESECUTIVO

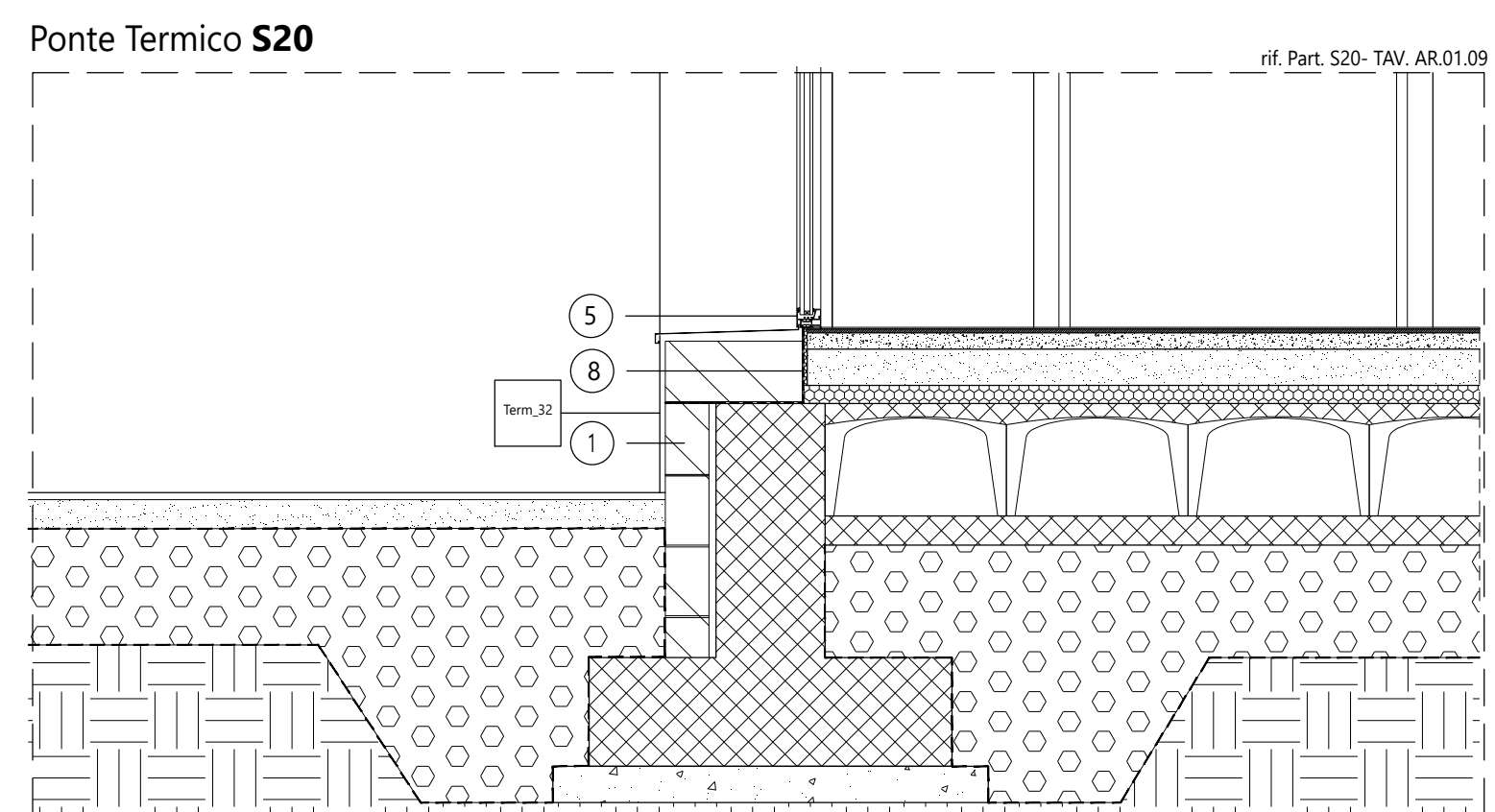
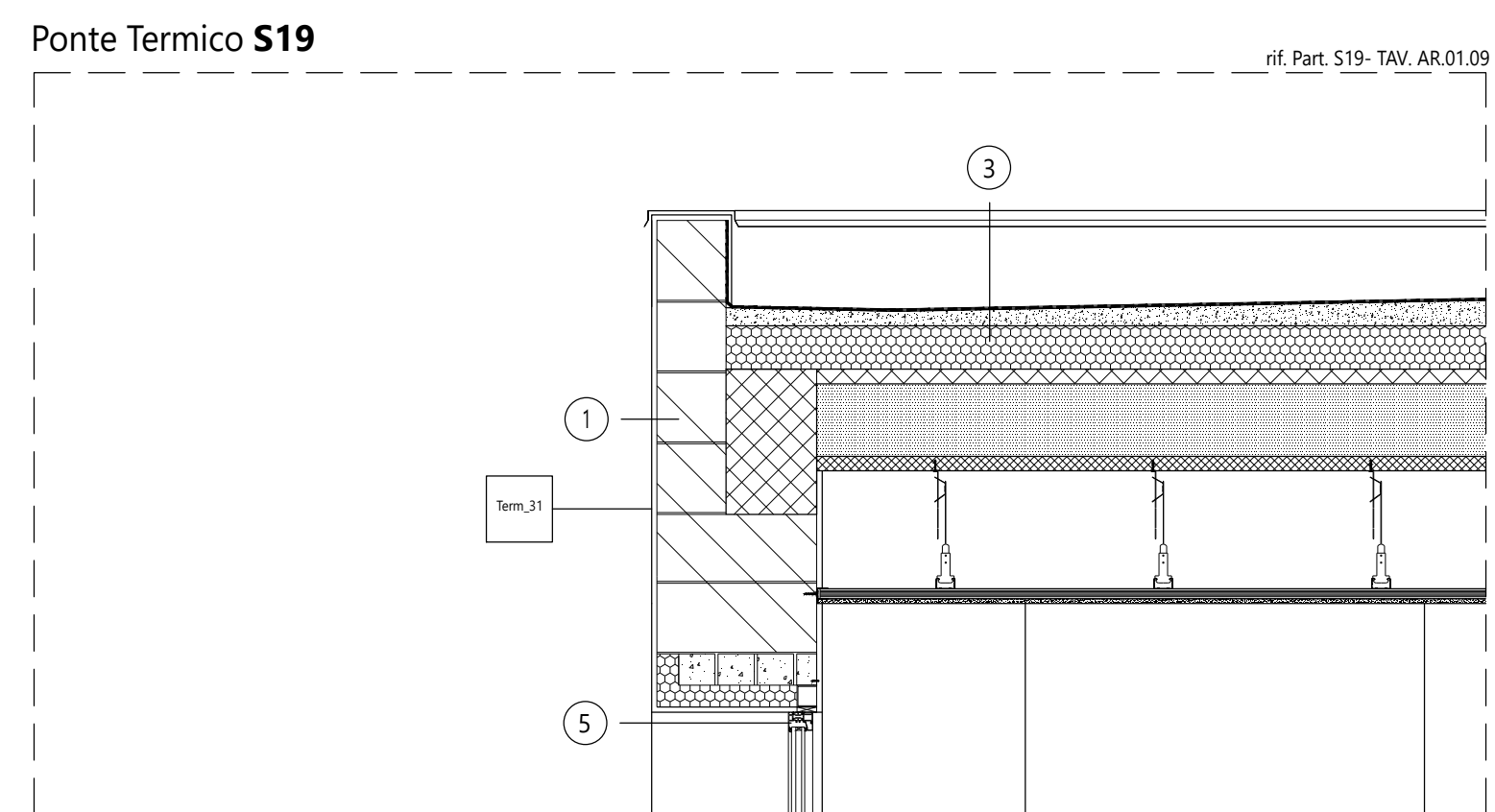
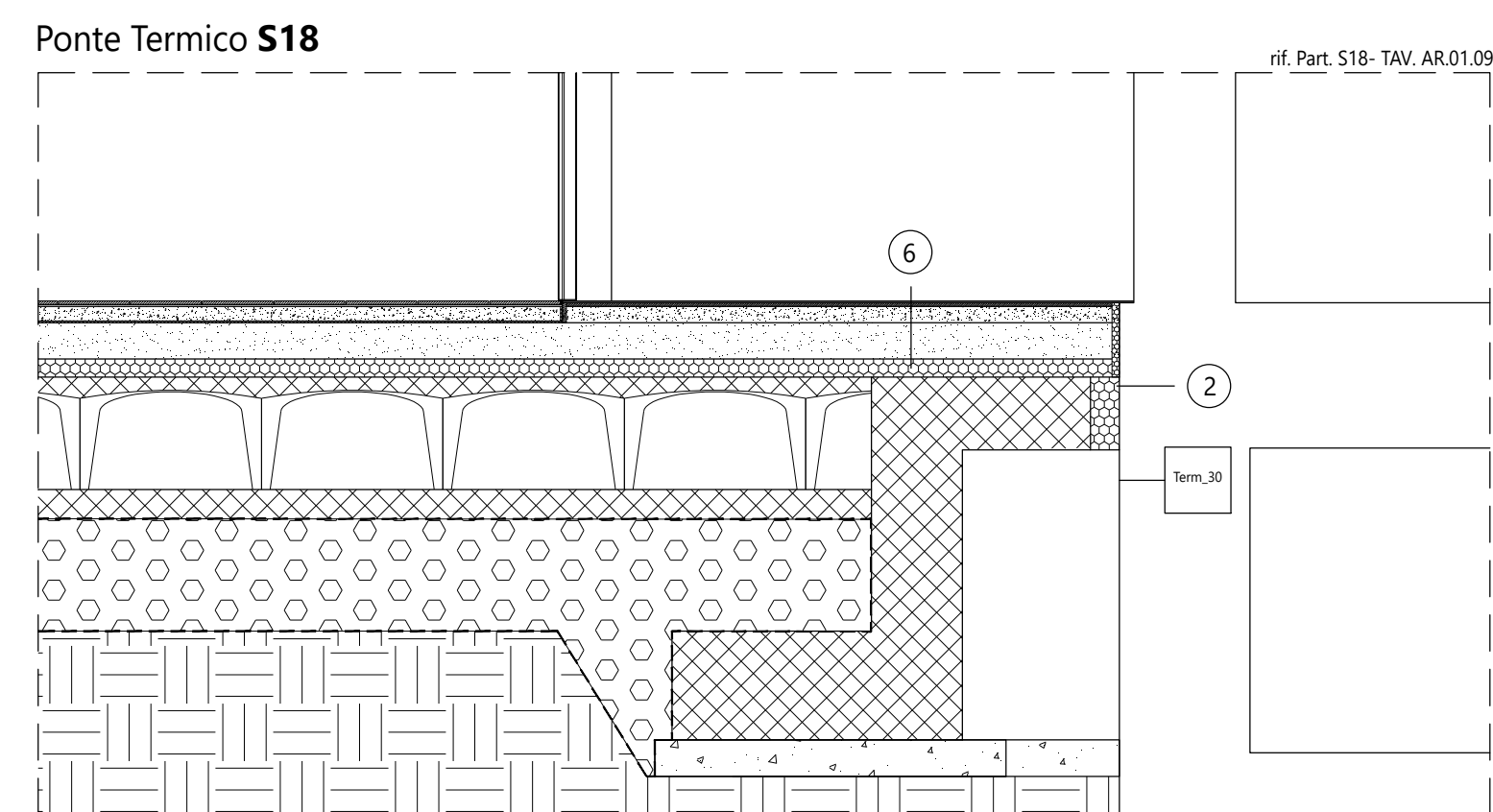
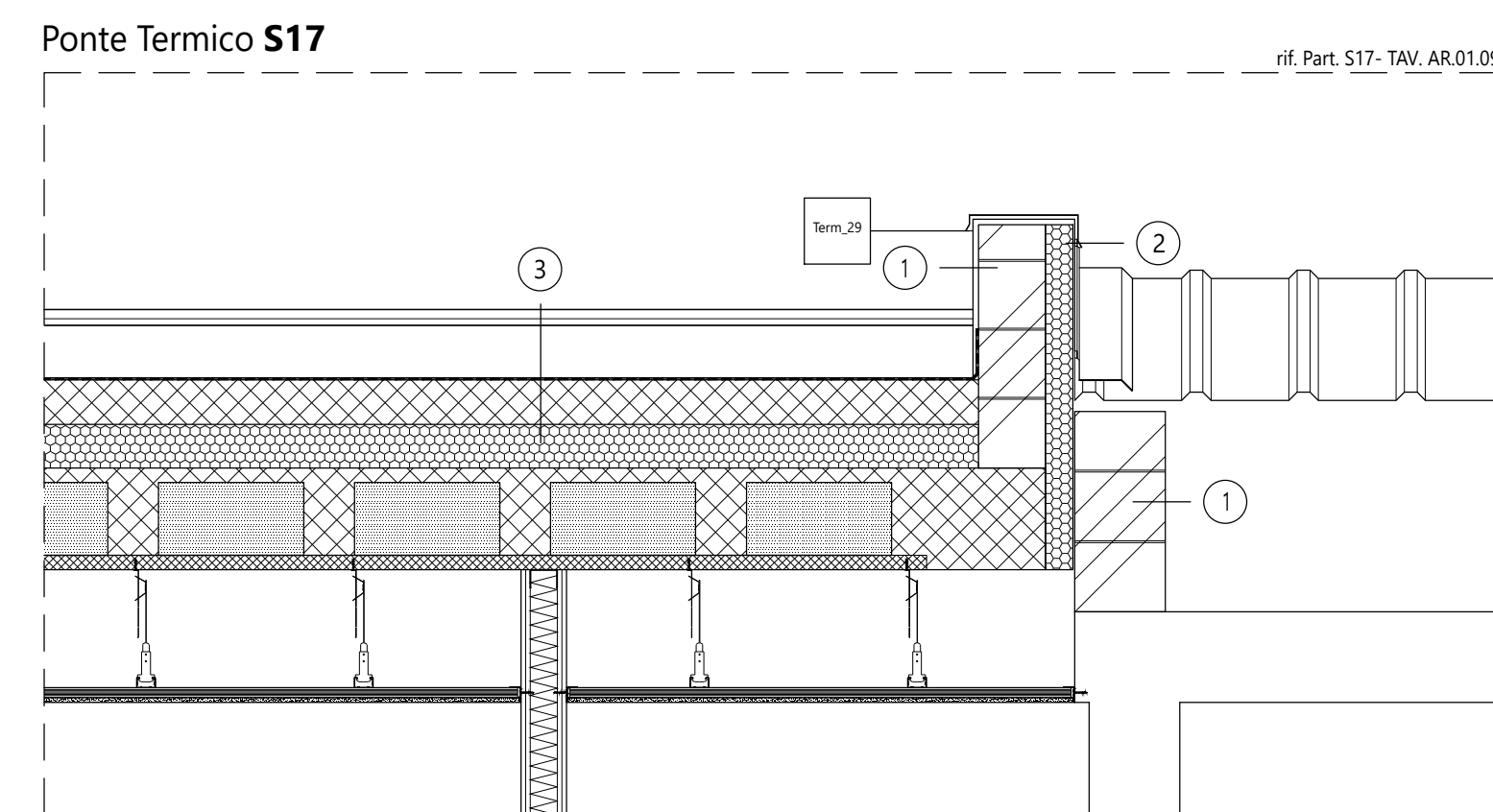
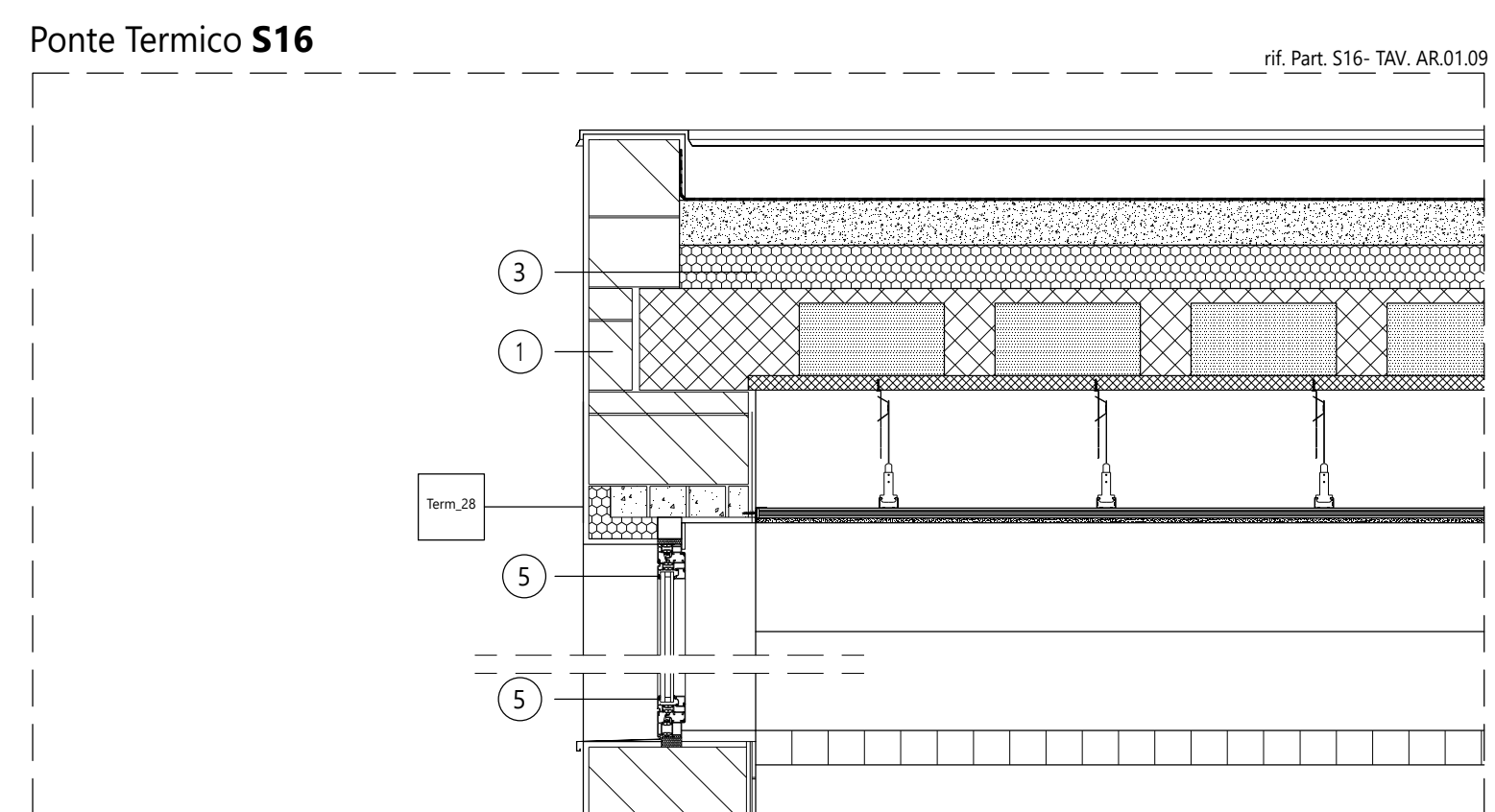
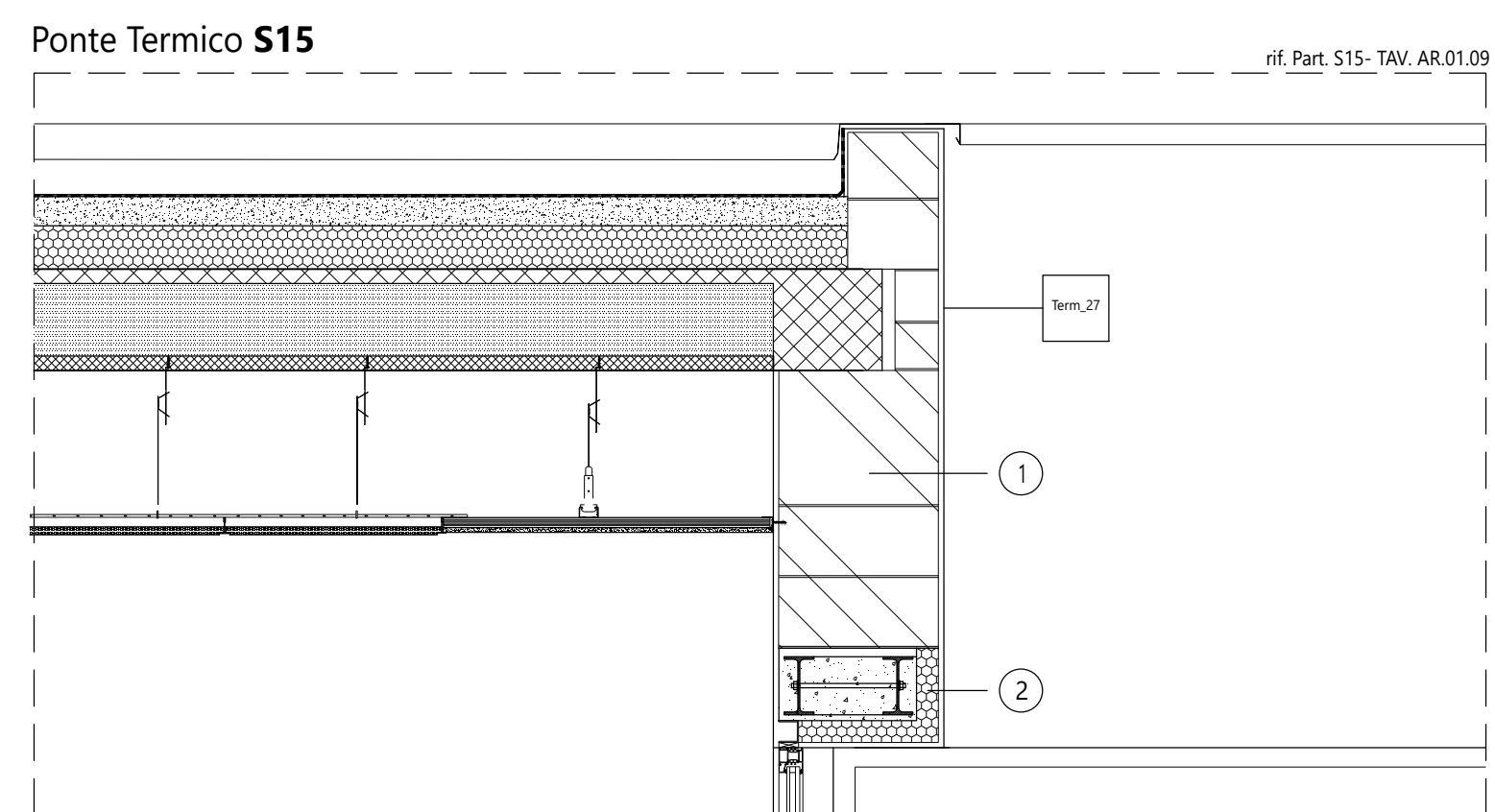
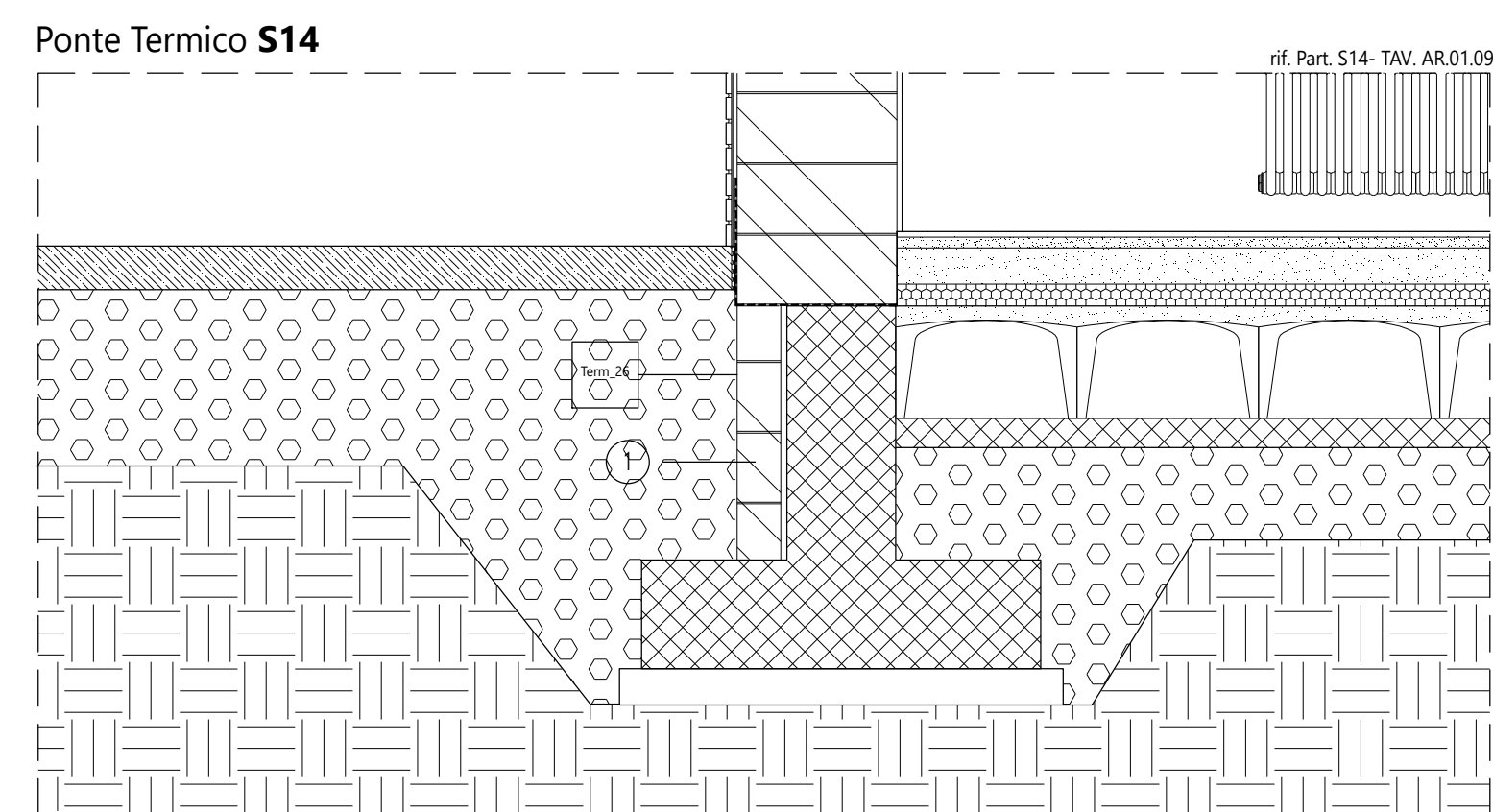
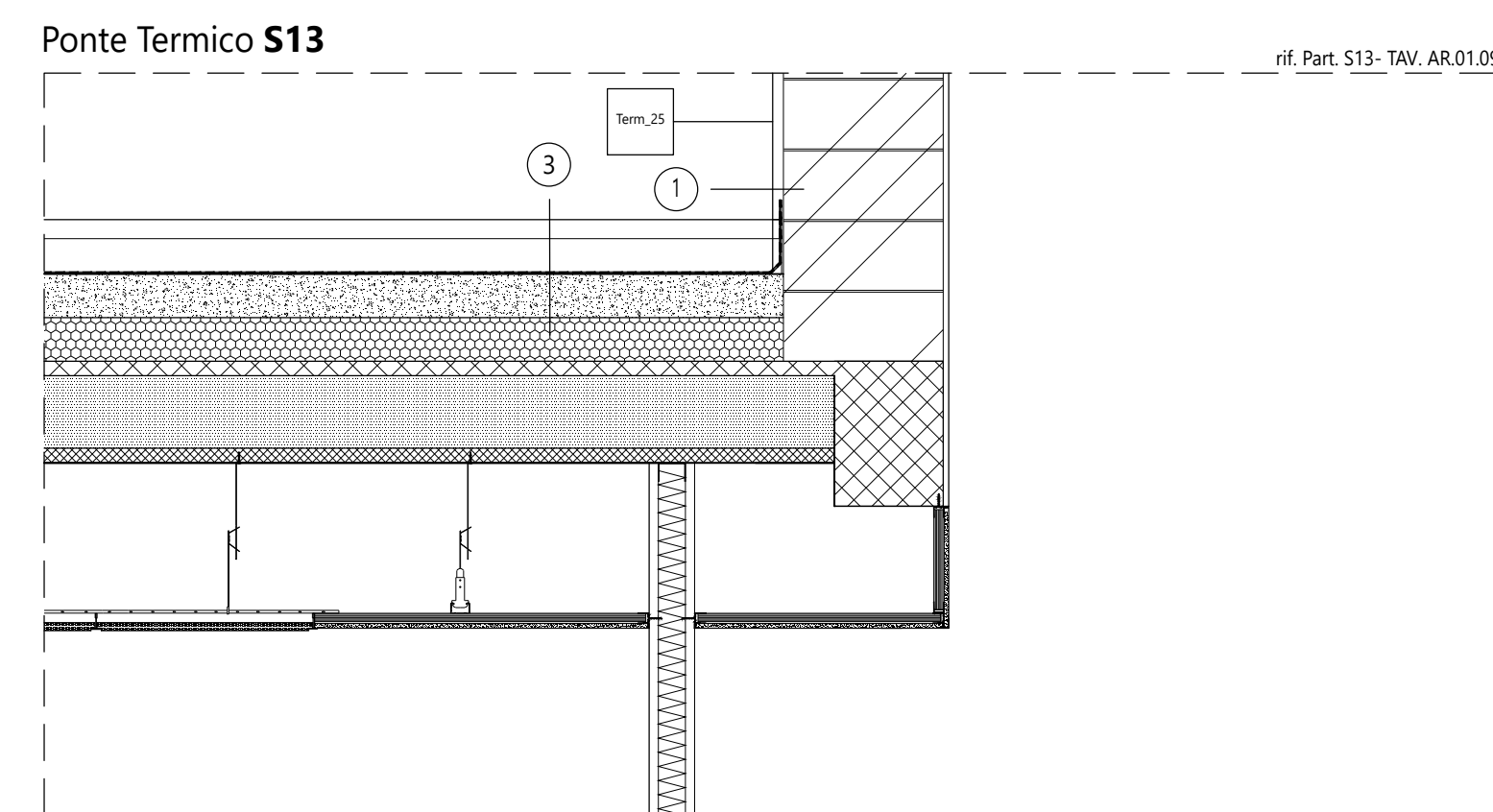
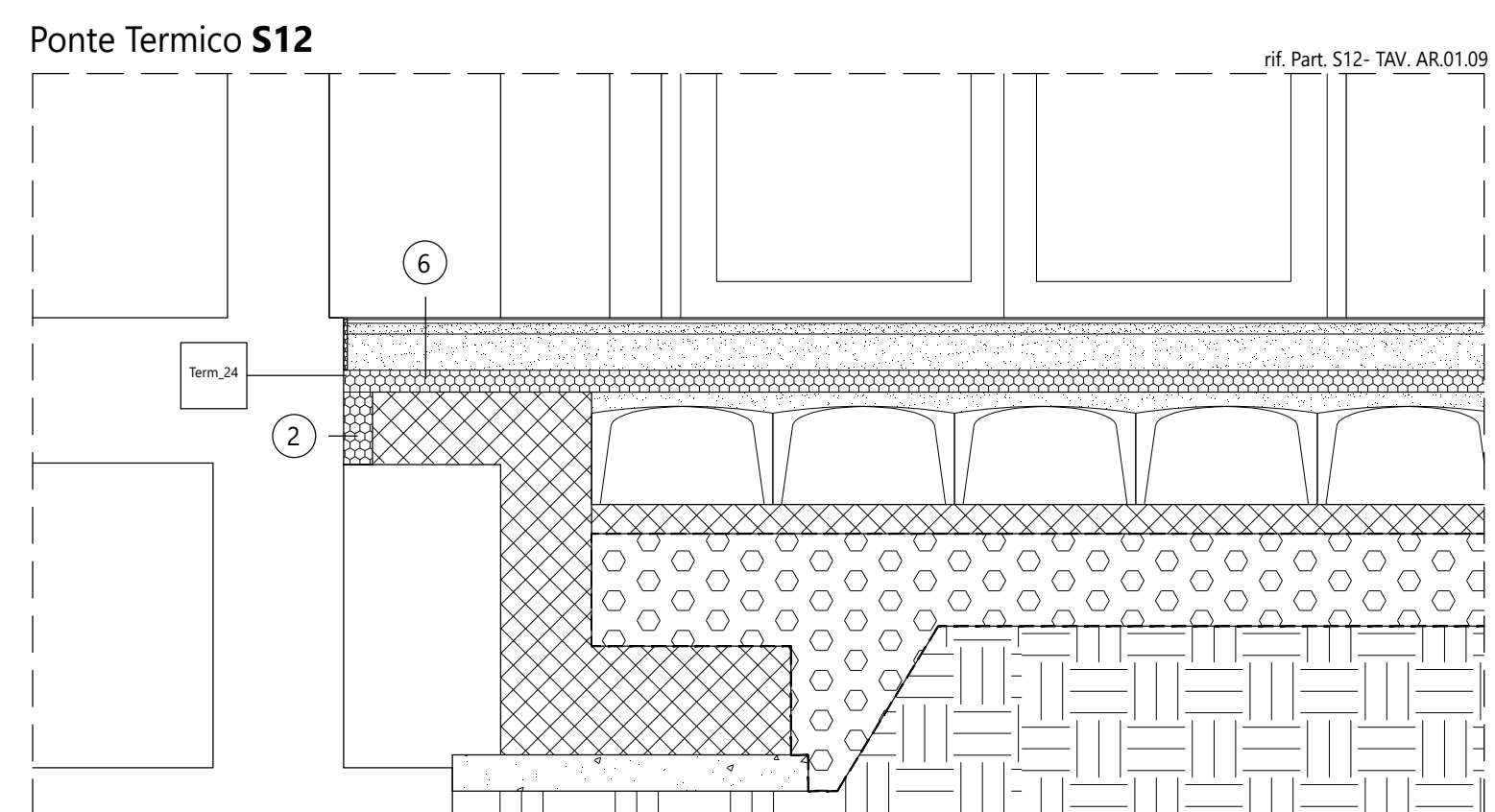
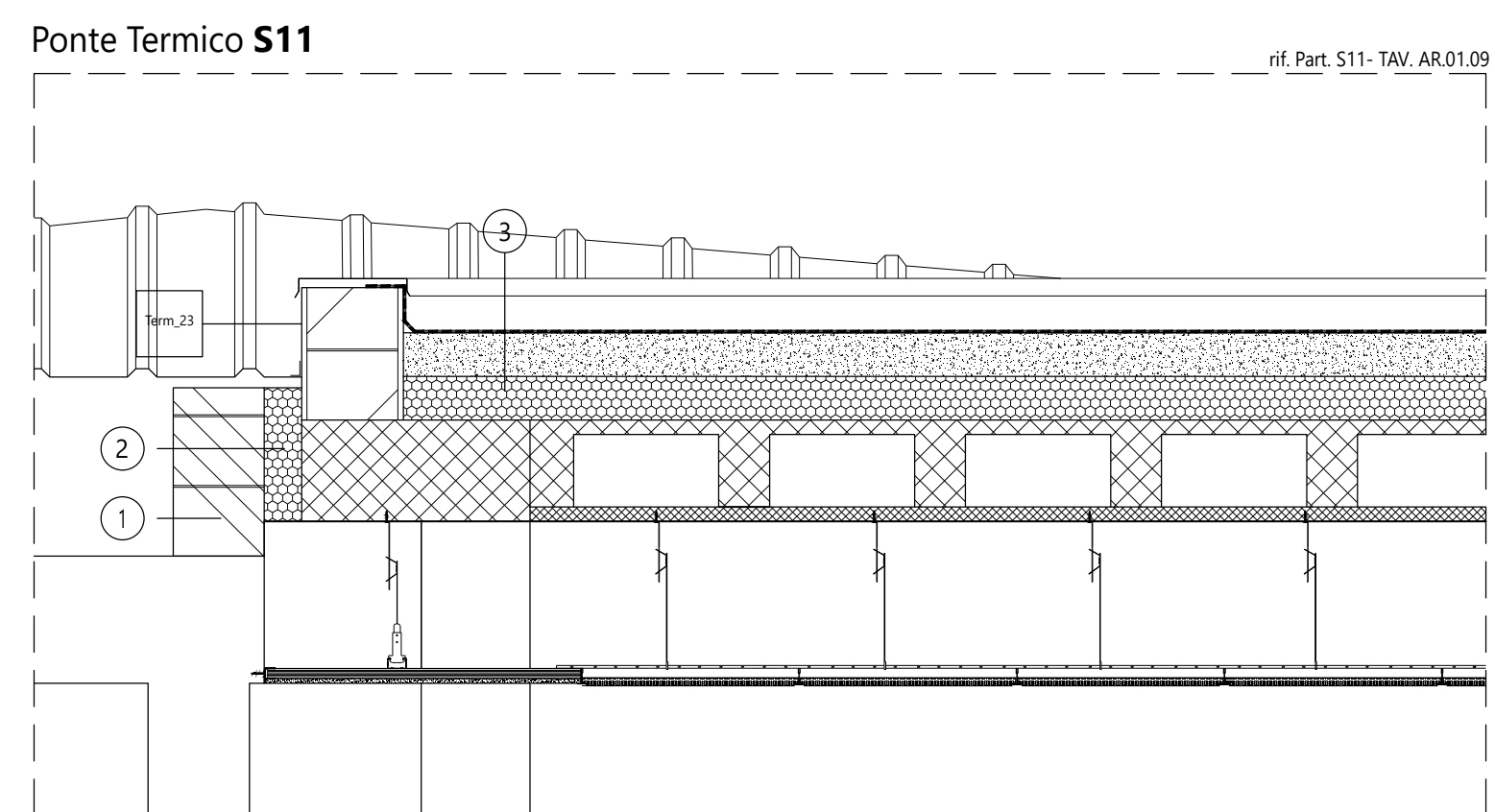
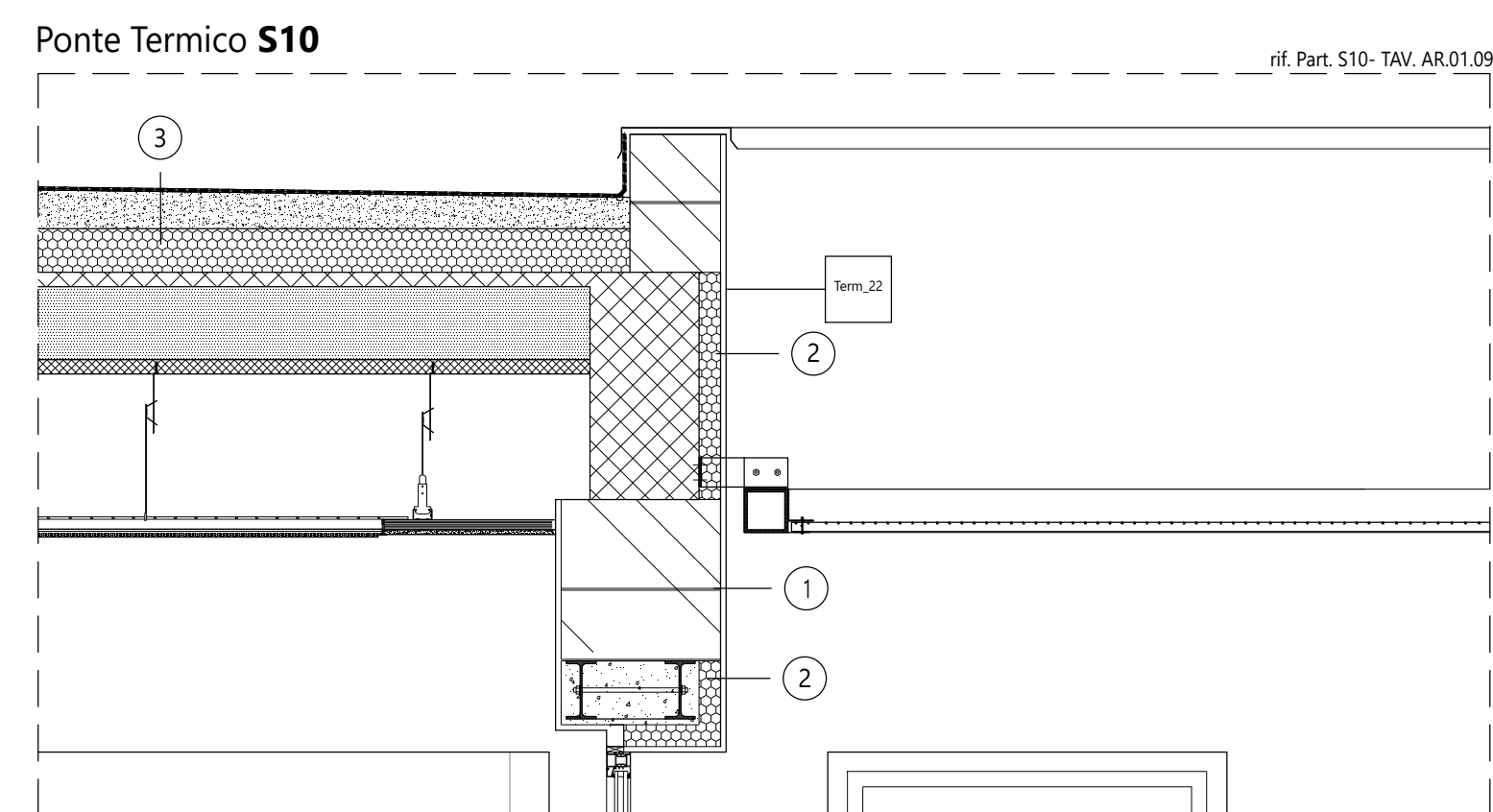
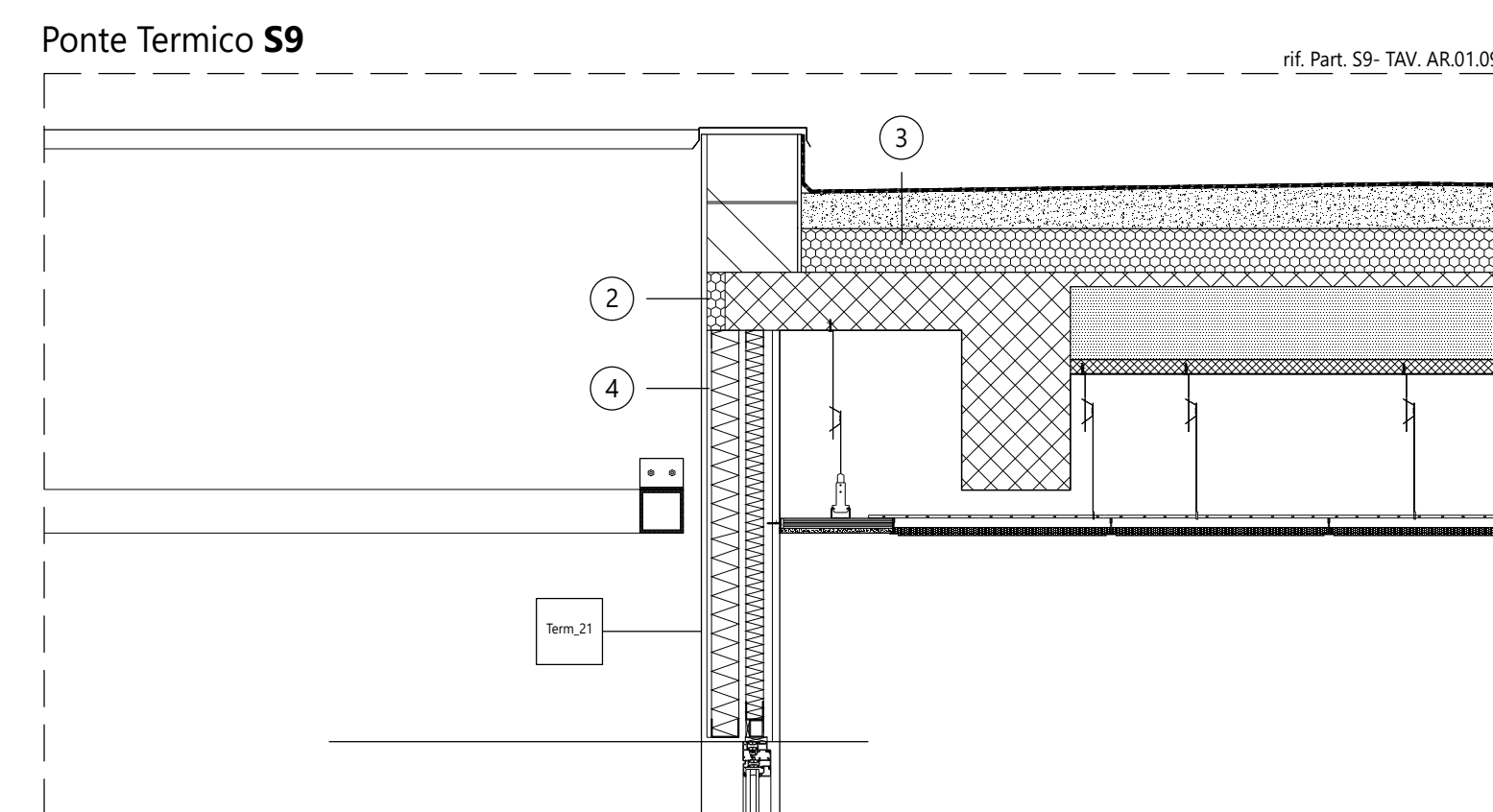
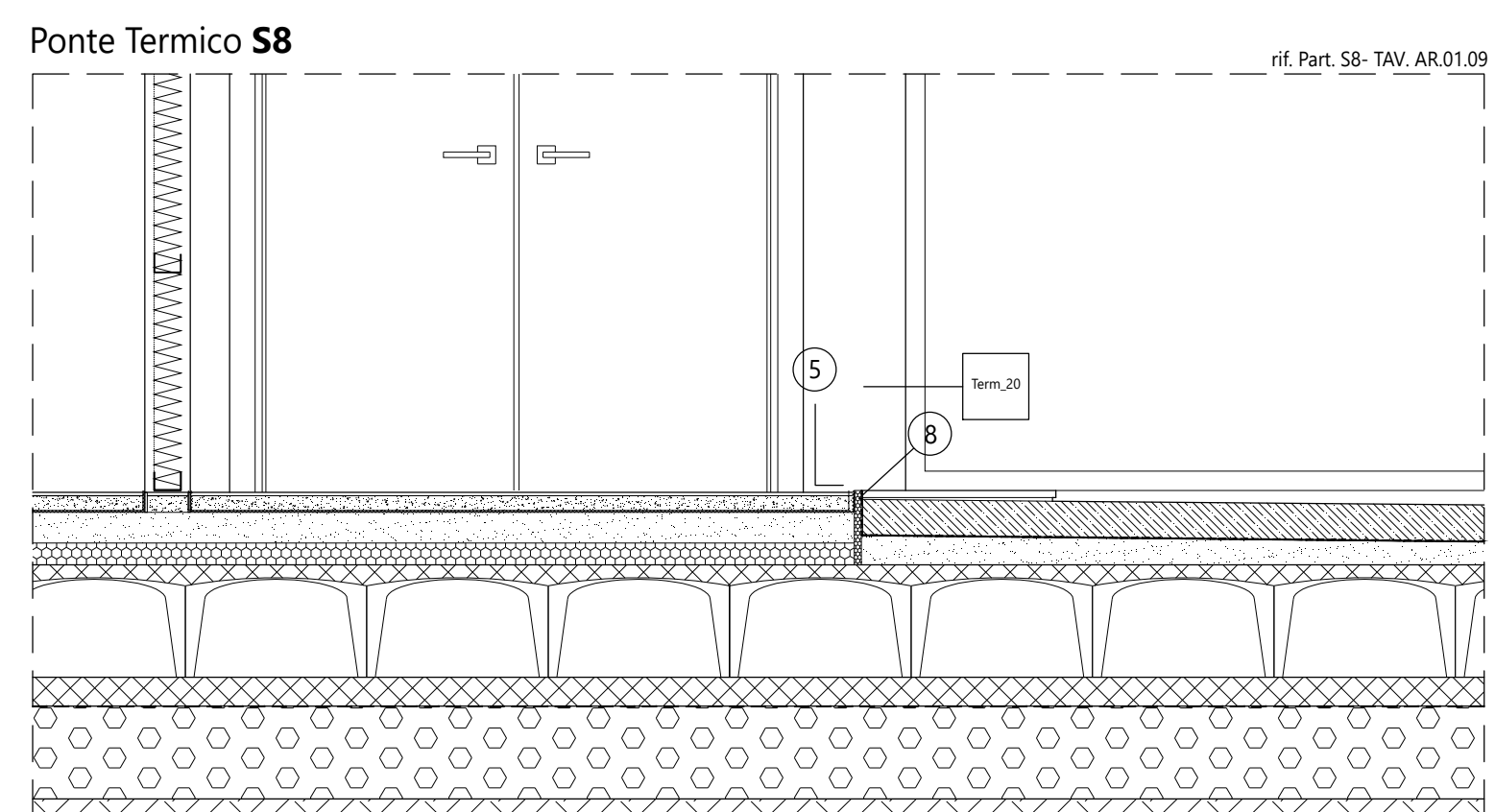
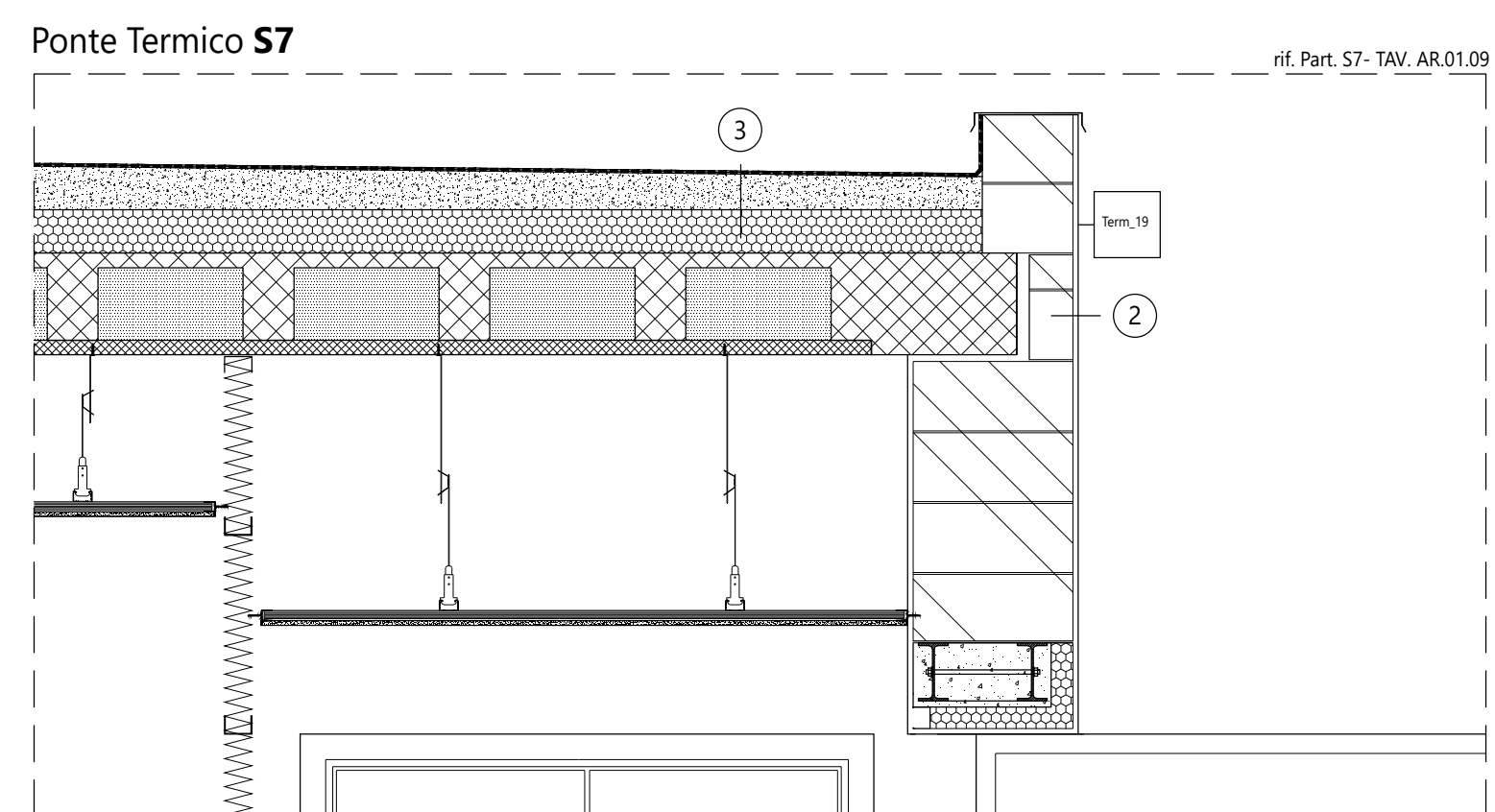
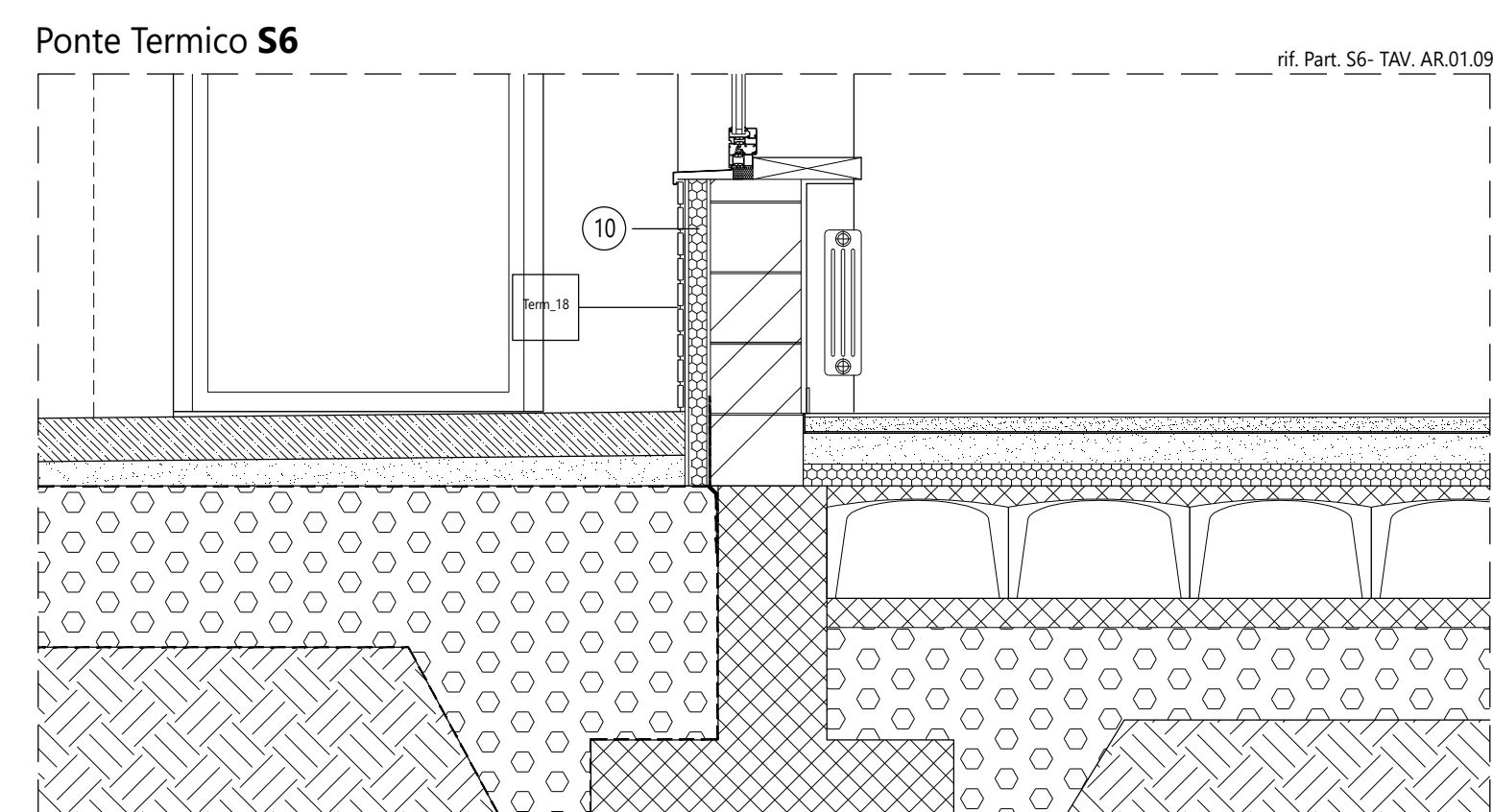
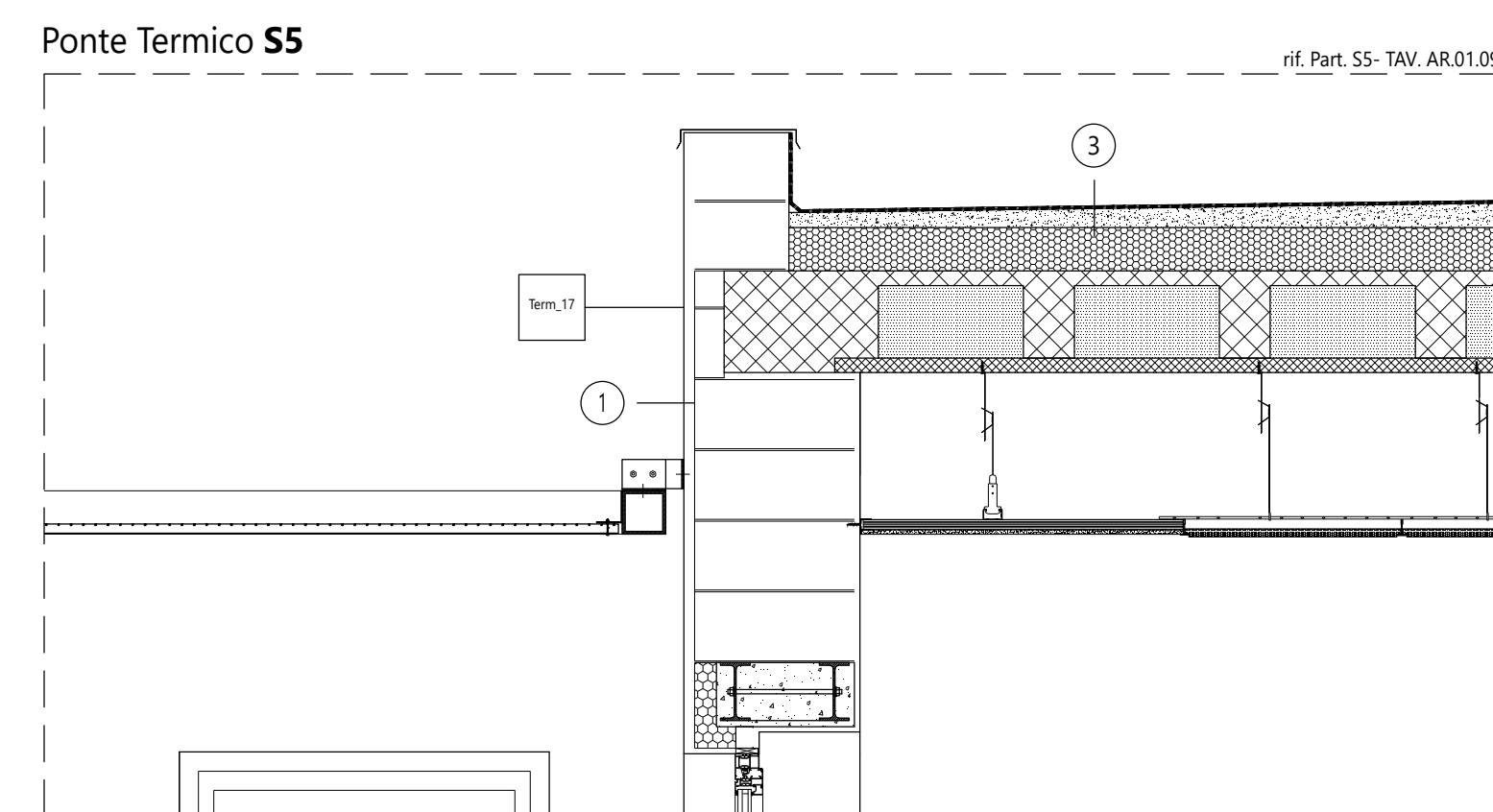
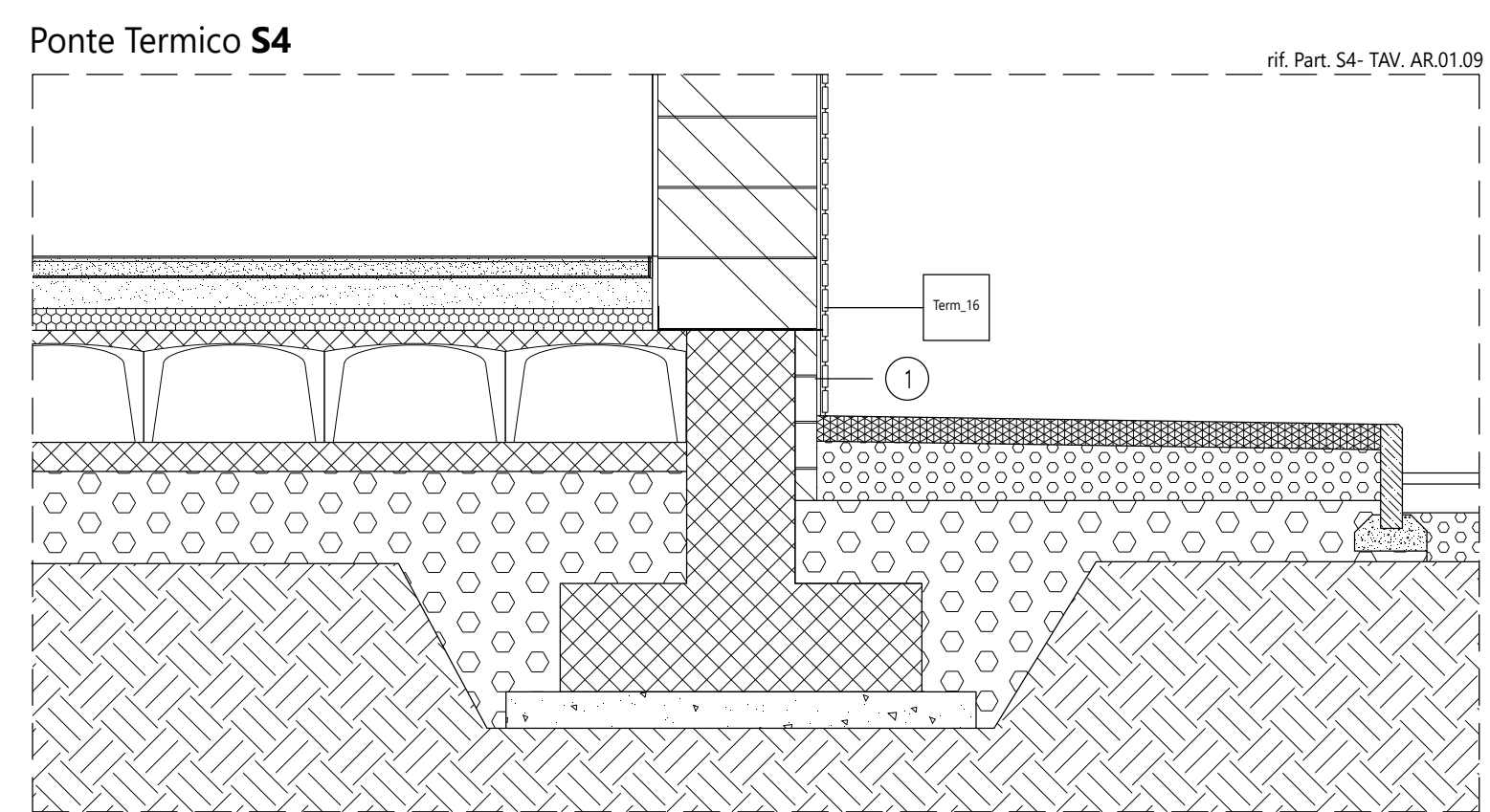
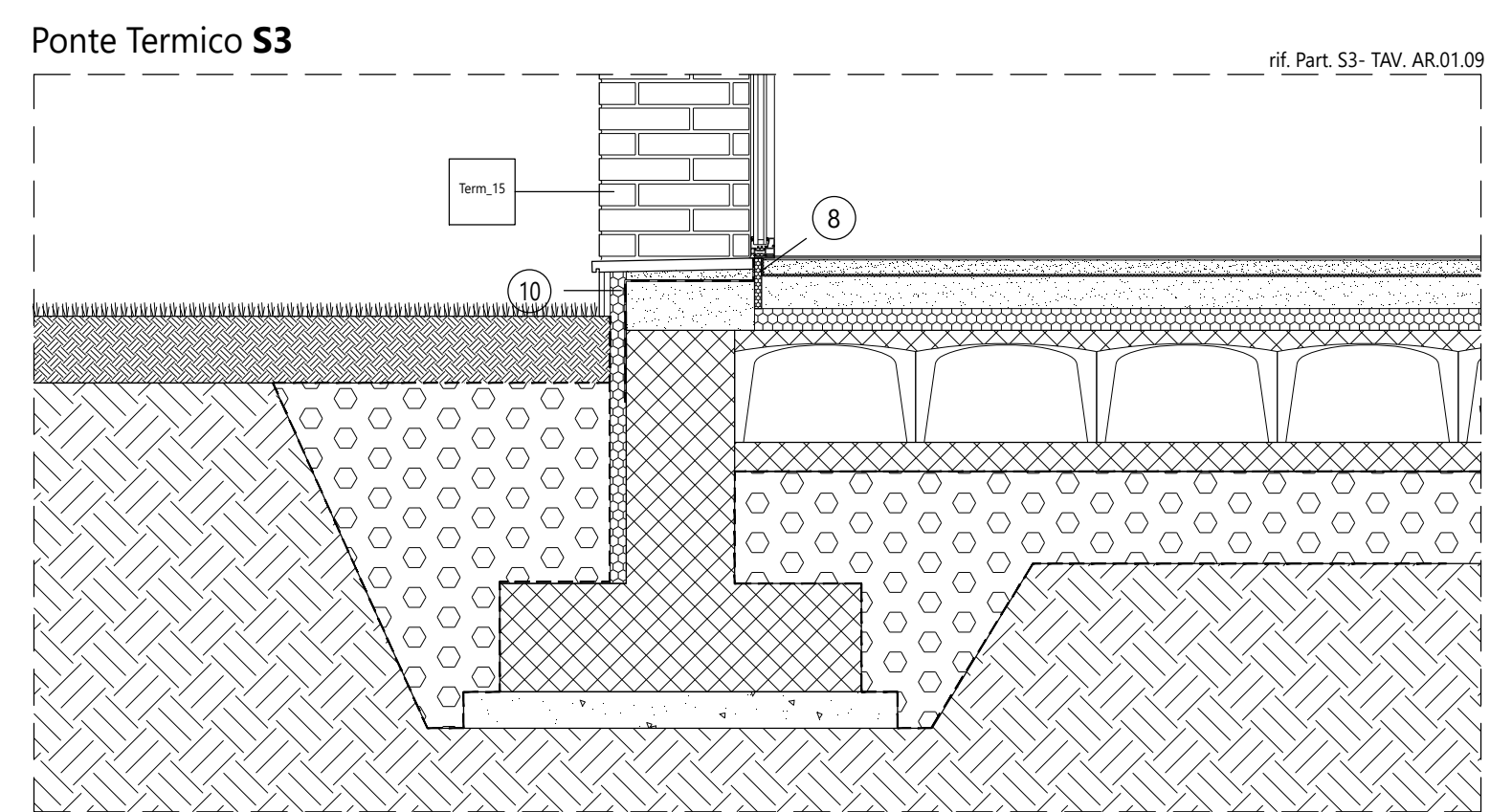
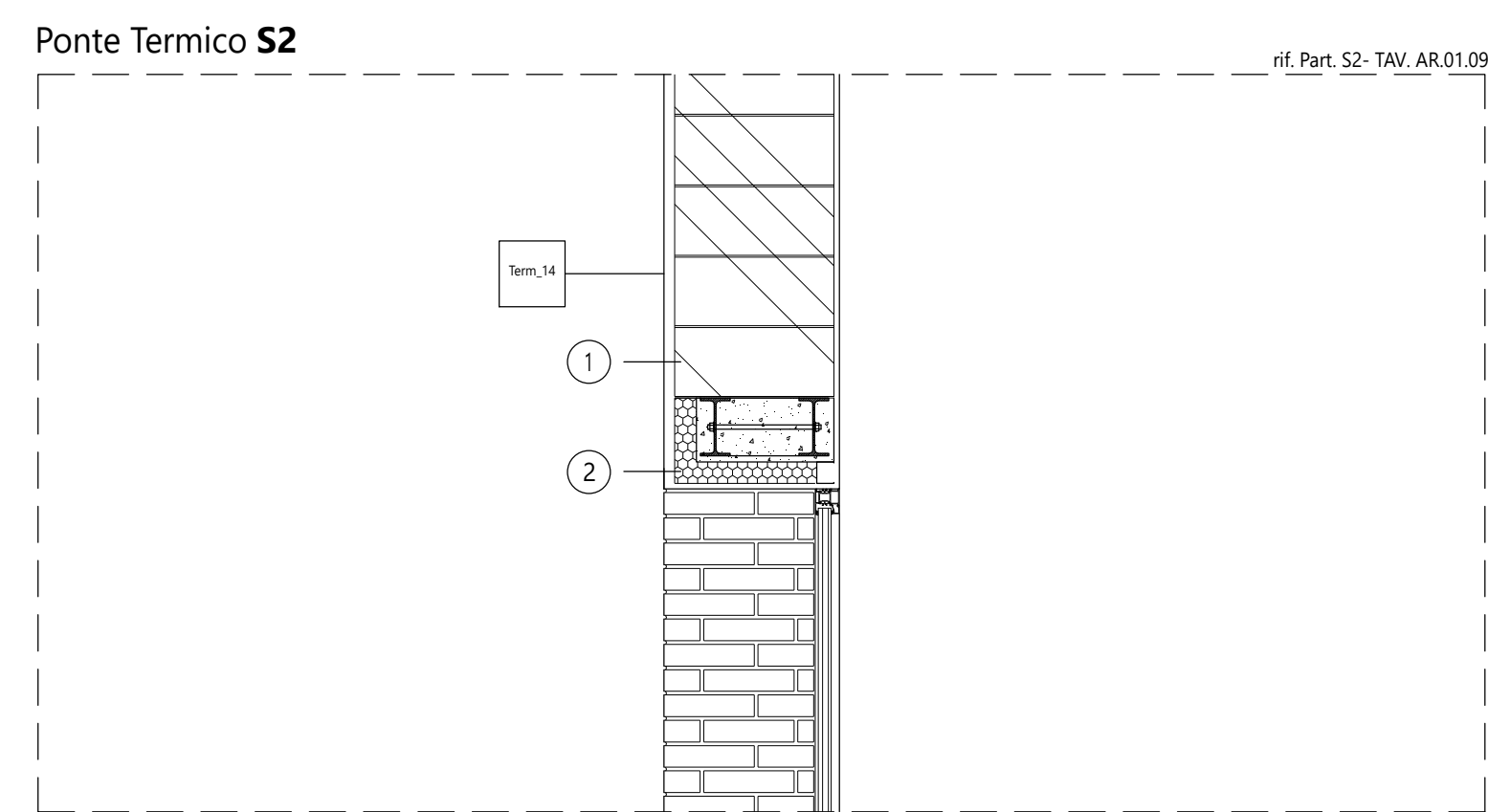
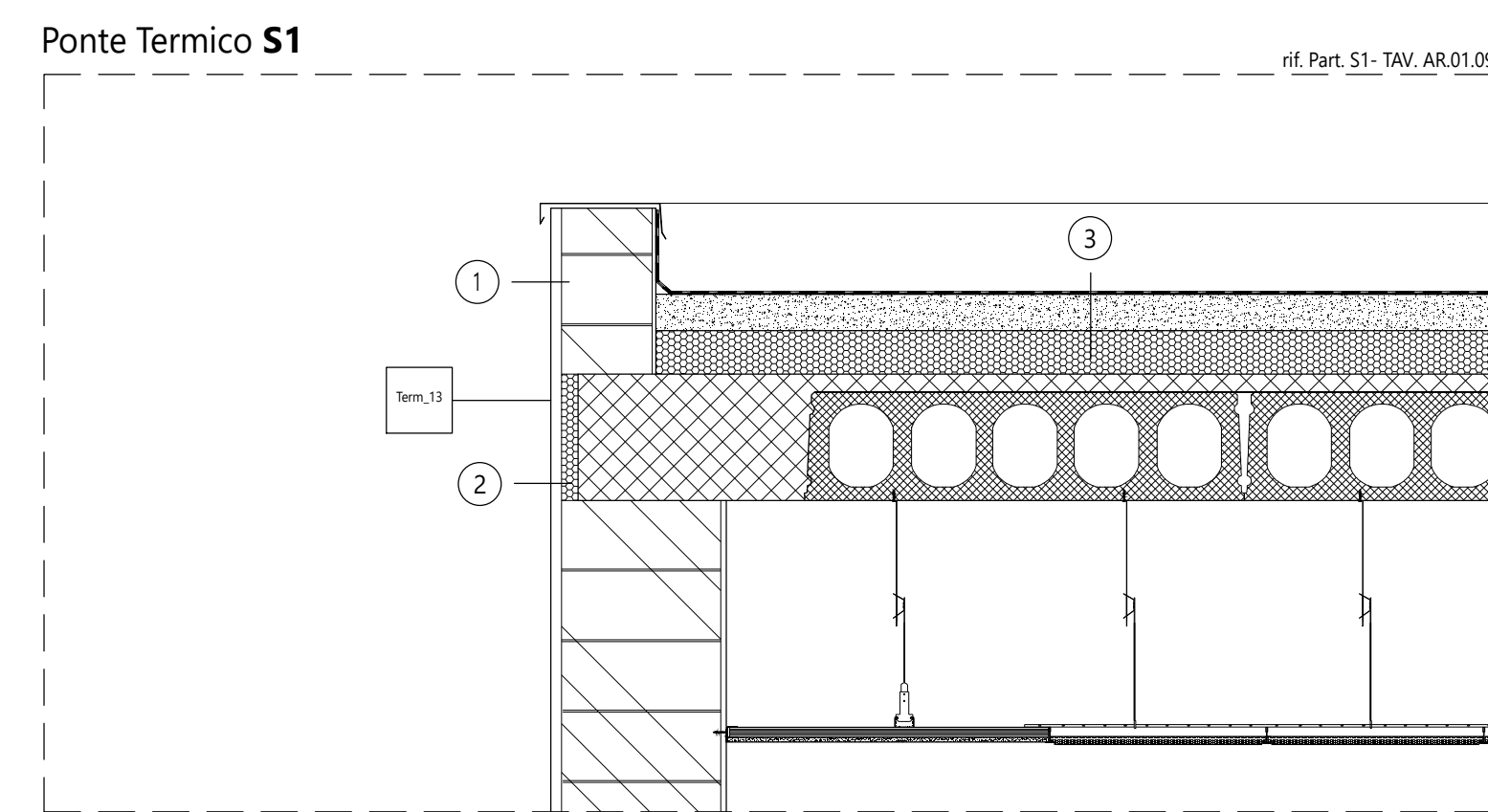
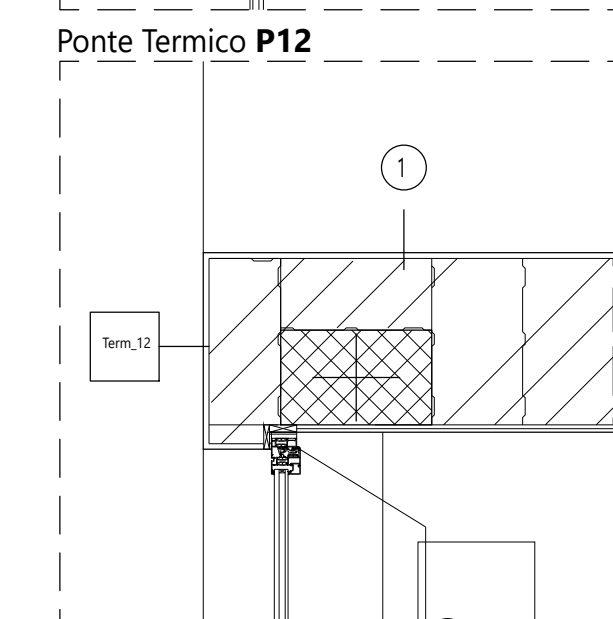
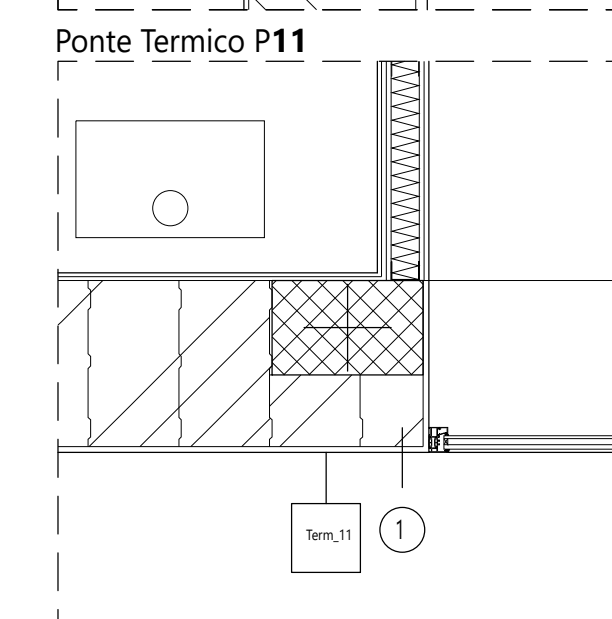
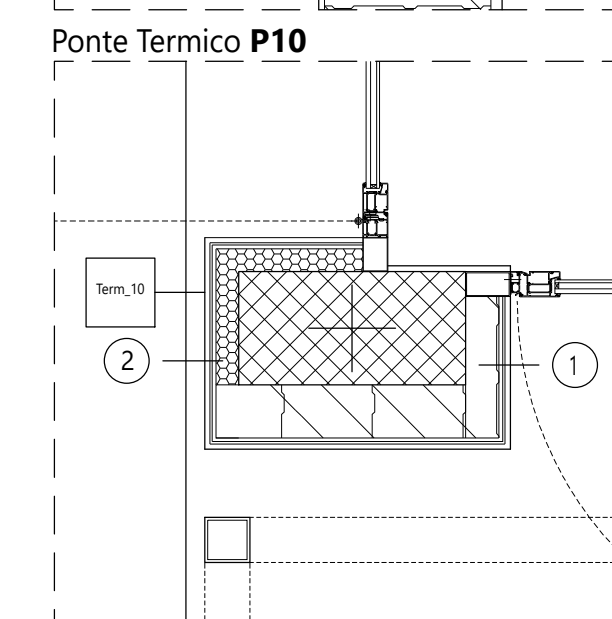
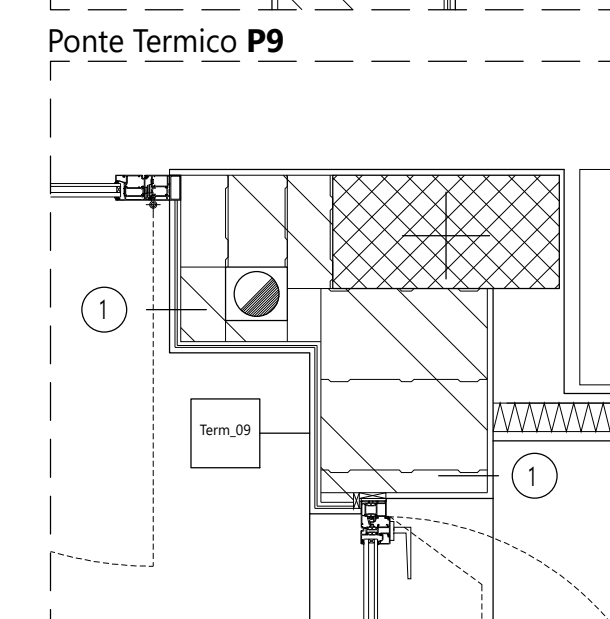
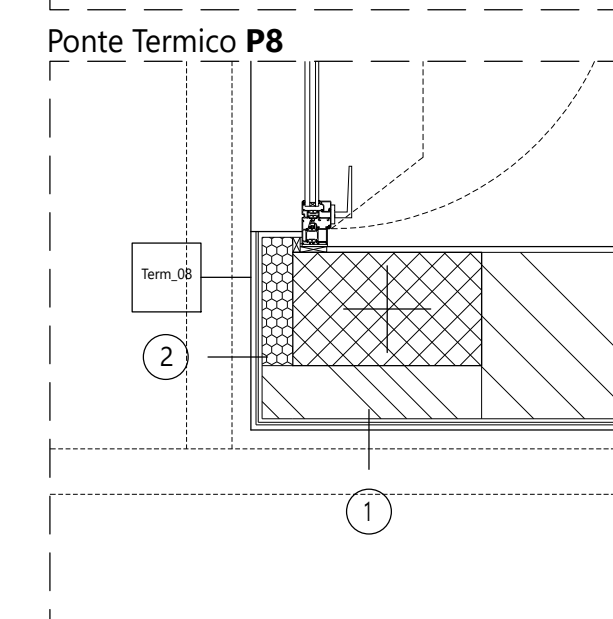
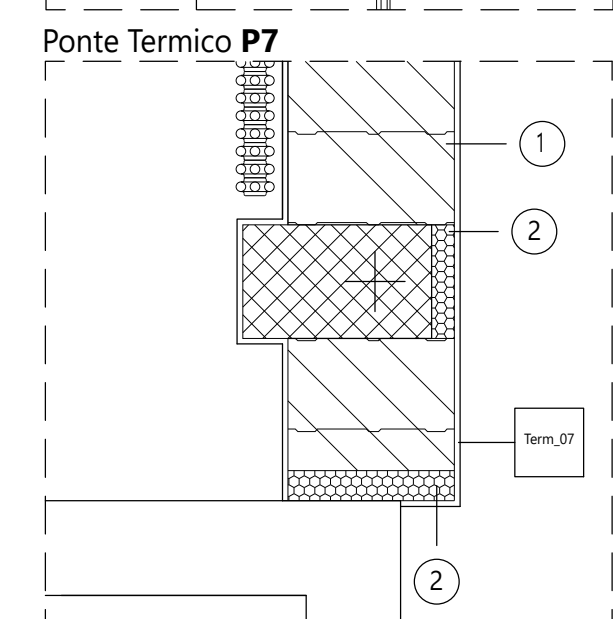
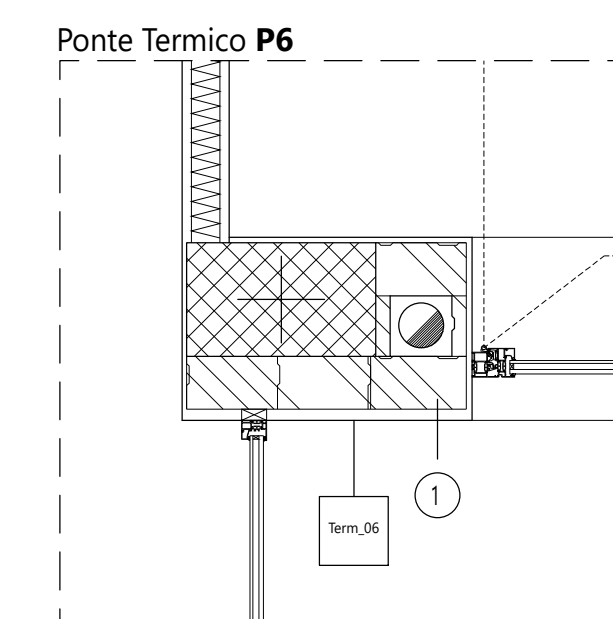
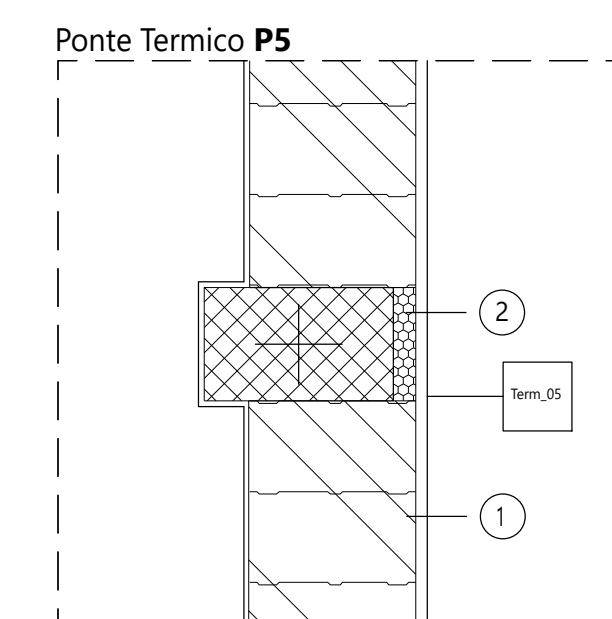
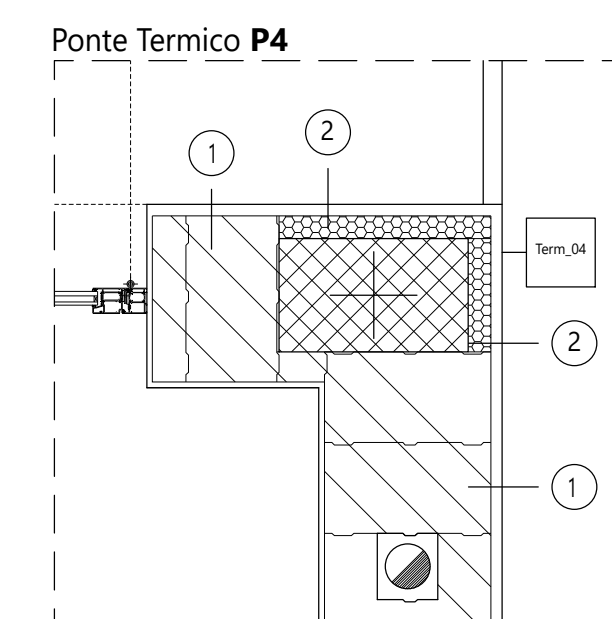
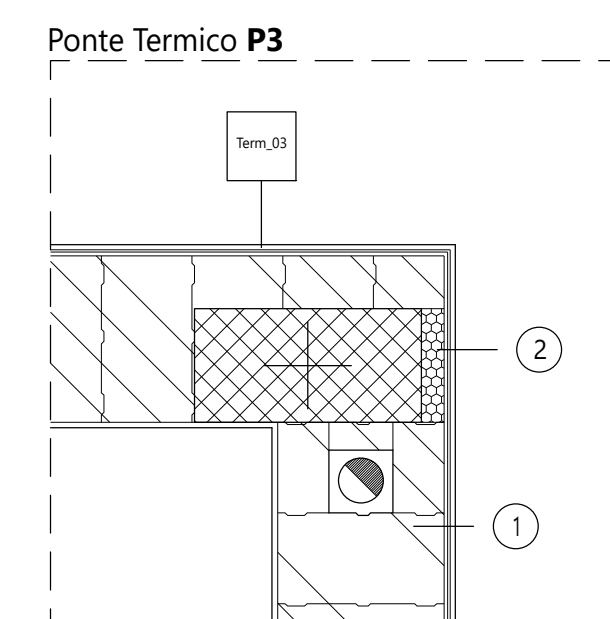
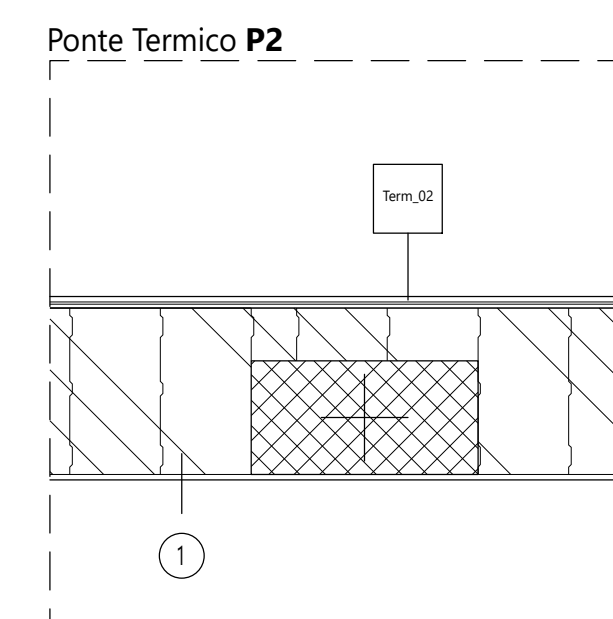
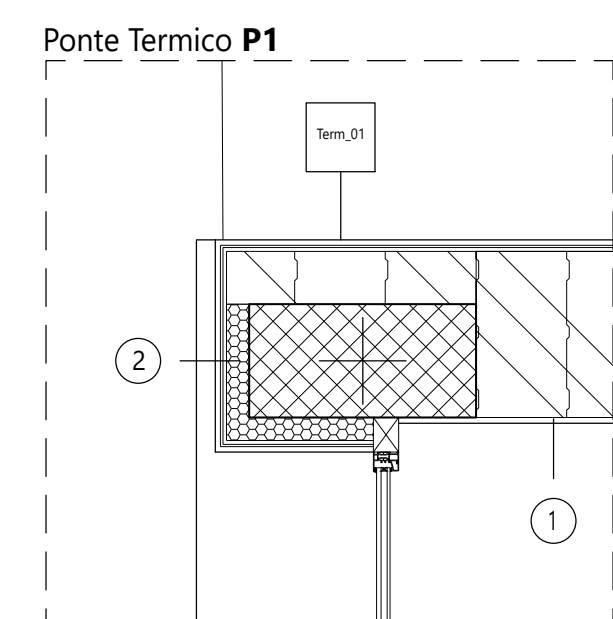
ELABORATO:

AR.01.13

PARTICOLARI COSTRUTTIVI:
ABACO DEI PONTI TERMICI

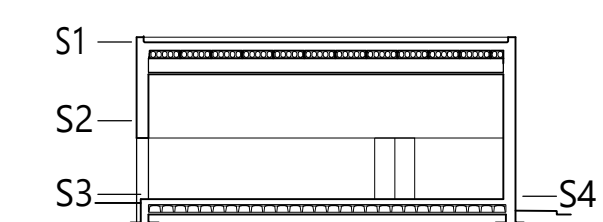


Elaborati descrittivi	ED	PROGETTISTI:		
Stato attuale	SA	ING. FERDINANDO CARDELLA ORDINE INGEGNERI della Provincia di Pisa n° 2026 Sezione A INGEGNERIA CIVILE E AMBIENTALE INGEGNERIA GEOLÓGICA E SISMICA		
Sistemazione sistema	SE			
Progetto Architettonico	AR			
Progetto Strutturale	SP			
Acustica	AC			
Previsione Incendi	PI			
Impianto Idrico-Sanitario	ID			
Impianti Termomeccanici	IM			
Impianti Anticendio	SA			
Impianti Elettrici e Speciali	IE			
DODE	SCALA	REV	DATA	OGGETTO
	1/20	0	05/05/2002	EMISSIONE VARIANTE
			DATA: MAGGIO 2002	
NOME FILE:	AR.01.13.dwg			

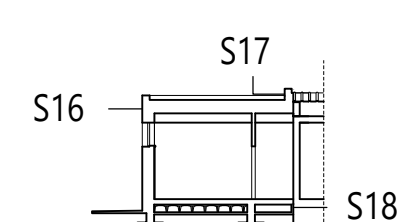


LEGENDA

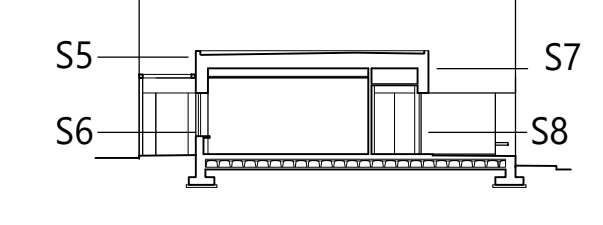
- 1) Blocco in laterizio porizzato;
- 2) Isolamento termico in EPS;
- 3) Isolamento del solaio di copertura con XPS sp. 12 cm;
- 4) Tamponatura a secco con strato esterno in lastre di fibrocemento tipo Knauf Aquapanel o equivalente sp. 1,25 cm rasate e pannello di Lana minerale da sp. 60 cm densità 18 kg/mc tipo Knauf MW55 o equivalente;
- 5) Attacco dell'infisso a taglio termico isolato con EPS;
- 6) Isolamento termico di calpestio del piano terra in XPS sp.5 cm;
- 7) Controparete a secco con lastre di fibrocemento tipo Knauf Aquapanel o equivalente sp. 1,25 cm rasata;
- 8) Interruzione della soglia con XPS;
- 9) Isolamento termico con lana di roccia;
- 10) Isolamento termico in XPS



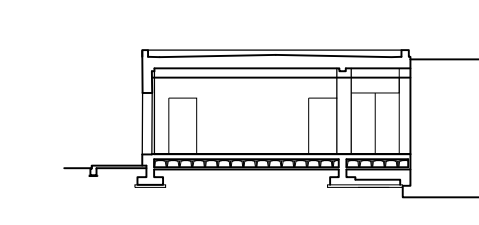
SEZIONE A-A



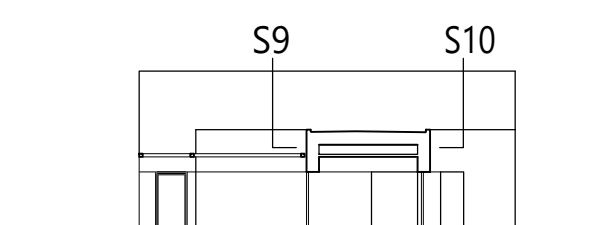
SEZIONE H-H



SEZIONE B-B



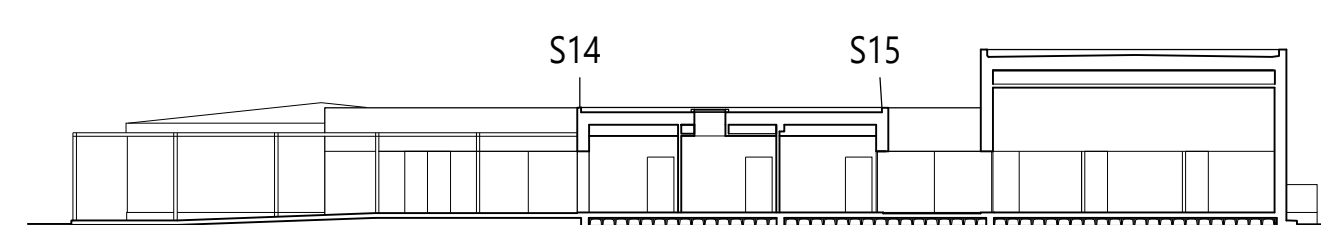
SEZIONE I-I



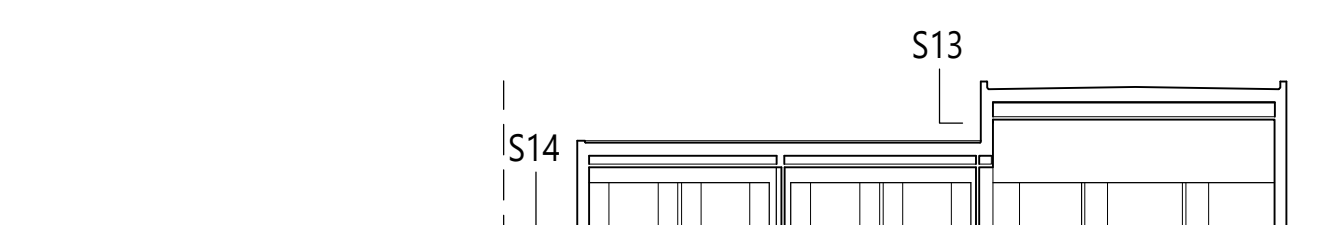
SEZIONE D-D



SEZIONE F-F



SEZIONE G-G



SEZIONE E-E